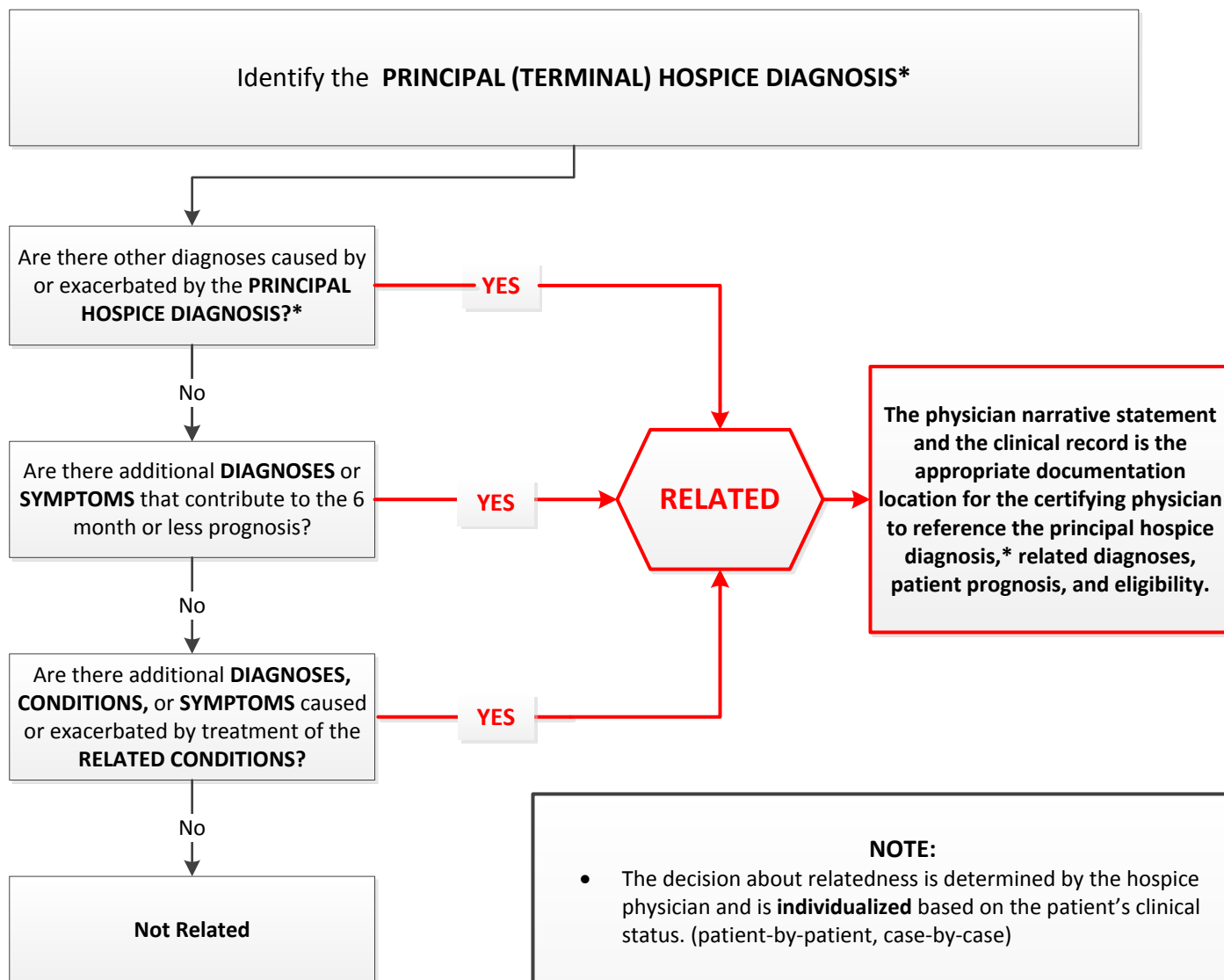


Physician uses all available information to evaluate for:

- Terminal prognosis of 6 months or less
- Terminal and related diagnoses that contribute to the terminal prognosis
- Symptoms caused or exacerbated by terminal diagnosis, related diagnosis or treatment of terminal and related diagnoses

Note: Determining relatedness is a **continuous process** by the hospice physician which takes into account the changes in the patient's condition.



NOTE:

- The decision about relatedness is determined by the hospice physician and is **individualized** based on the patient's clinical status. (patient-by-patient, case-by-case)
- Decisions about relatedness change as the patient's condition changes.
- Clinical examples related to this process flow are included in the "Determining Relatedness in Hospice" resource.

**The following are used as equivalent terms:
terminal hospice diagnosis = principal hospice diagnosis = primary terminal diagnosis = primary hospice condition*

